

zero|waste

B e y o n d C o m p o s t i n g



THE GREEN BIN CELEBRATES ITS

1st Birthday

RESIDENTIAL FOOD AND KITCHEN WASTE COLLECTION NOW REGION-WIDE

In October, the region welcomed 17,500 City of Nanaimo homes to the Green Bin Program. Now all households in the region receiving municipal garbage and recycling collection can send their food waste for composting to feed the land instead of the landfill.

REGION LEADS THE WAY IN WASTE DIVERSION

Since the Regional District of Nanaimo and its member municipalities launched the Green Bin Program a year ago, households have cut their garbage by half. With 52,000 households on board, the program will annually divert roughly 6,000 tonnes of what was once garbage to a licensed composting facility.

In 2008, Canada disposed of 894 kg of waste per capita, including both residential and commercial waste. BC disposed of 777 kg of waste per capita, while the RDN disposed of 473 kg.

City of Nanaimo operator Jason Nix empties a green bin into one of the City's new split-packer trucks designed to collect garbage and food waste in the same vehicle.



By 2012, it's projected the region will reduce its per capita disposal to 350 kg and achieve a 70 per cent landfill diversion rate, one of the lowest disposal rates and highest diversion rates of any region in Canada.

The region's residents and businesses deserve a pat on the back for supporting recycling, composting and other Zero Waste programs. Those efforts are paying off by conserving energy, resources, valuable landfill space, and reducing greenhouse gas emissions.

COMPOSTING FACILITY UPGRADED FOR EXPANDED GREEN BIN PROGRAM

In 2004, the ICC Group opened its Duke Point composting facility. By banning landfill disposal of commercial food waste and introducing a Waste Stream Management Licensing Bylaw, the RDN created the conditions for private sector investment in a local large scale composting operation.

With expansion of the Green Bin Program completed, food and yard waste received at ICC is projected to increase from 14,000 tonnes in 2009 to 20,000 tonnes in 2012. To prepare for this increase in volume, ICC has made several upgrades to its plant. These include expanding its receiving area and improving odour control.

ICC has received grants to test the production of synthetic fuels derived from materials and contaminants screened from its finished compost. The fuels produced will provide a source of renewable green energy.



Compost ready for screening produced from food waste collected through the Green Bin Program.

BUSINESSES AND INSTITUTIONS DO THEIR PART IN DIVERTING FOOD WASTE

Since a landfill ban was introduced in 2005, grocery stores, restaurants, health care and educational facilities have had their own version of the Green Bin Program, diverting more than 15,000 tonnes of food waste to the ICC composting facility.

Introduction of the Green Bin Program to single family households throughout the region has helped educate residents on materials accepted at ICC's composting facility.

With this in mind, restaurants with self-serve food areas and cafeterias are increasingly providing receptacles for their customers to recycle their leftover food scraps, food soiled paper packaging and recyclable beverage containers.

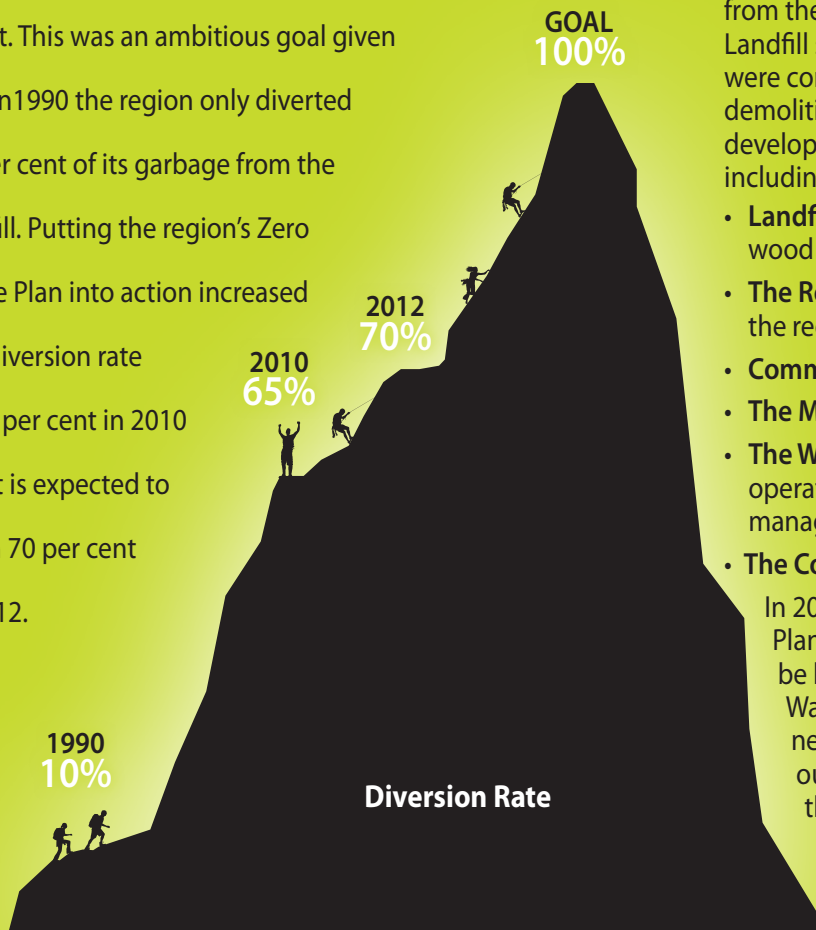
Please do your part to help businesses and institutions maximize their waste diversion by using their compostable waste and recycling collection bins. Remember to check the signage for acceptable materials. Placing materials that contain plastic, metal, or glass in the compostable receptacle **can contaminate an entire load and add unnecessary sorting time for staff and extra expense for business owners.**

*Woodgrove Centre
Food Court attendant,
Ashley Wheeler, adds a
compostable paper napkin
to the compostable organics
collection bin.*



ZERO WASTE PROGRAMS DELIVER RESULTS

Ten years ago the RDN Board committed to "zero" as the region's waste disposal target. This was an ambitious goal given that in 1990 the region only diverted 10 per cent of its garbage from the landfill. Putting the region's Zero Waste Plan into action increased this diversion rate to 65 per cent in 2010 and it is expected to reach 70 per cent in 2012.



What is included in the Zero Waste Plan?

The region's 2004 Solid Waste Management Plan set an interim goal of diverting 75 per cent of the region's waste from the landfill. A study of waste received at the Regional Landfill showed that the largest components by weight were compostable organics (34 per cent), and construction/demolition waste (16 per cent). This research guided the development of Zero Waste Programs, Policies and Projects including:

- **Landfill disposal bans** on commercial food waste, clean wood waste, and household plastic containers;
- **The Residential Food Waste Collection Pilot Project** and the region-wide **Green Bin Program**;
- **Commercial Food Waste Diversion** ;
- **The Multi-Family Recycling Program**;
- **The Waste Stream Management Licensing Bylaw** (sets operating and environmental standards for private waste management, recycling and composting operations); and
- **The Construction/Demolition Waste Diversion Strategy.**

In 2012, the RDN will review its Solid Waste Management Plan to further reduce the amount of waste that must be landfilled. Before starting any new programs, a Solid Waste Composition Study will be completed to explore new approaches that will be most effective in realizing our Zero Waste goal and making garbage a thing of the past.

NANAIMO FAMILY ONE OF SIX COMPETING IN CANADIAN ENERGY DIET CHALLENGE

As a family with a gas-guzzling pick-up truck, SUV and a 1-800-GOT-JUNK? waste removal franchise, the Belbins are well aware of the financial and environmental impacts of how we overconsume energy, water, food and household goods.

That awareness, and the decision to do something about it, led the young family of five to win the opportunity to participate in the Energy Diet Challenge. A partnership of Canadian Geographic and Shell Canada, the challenge is about helping people learn more about energy and the ways they can improve energy efficiency.

From September 12 to December 4, the Belbins and five other Canadian families will vie to see who can shrink their carbon footprint the most through energy and water efficiency and conservation.

The Belbin family has already made some big changes. Grant and the kids ride their bikes to work and school and Alison has learned to adapt to 5-minute showers. **“We’re lucky because we have the Green Bin Program to reduce our carbon footprint and none of the other families do,” says Alison.**



Energy Diet Challenge. From the left: Drew, Alison, Grant, Kai and Mara.

“We live in a regional district and city that’s ahead of the times, making it easier to make changes in our habits.”

Residents of the region can track their own energy use, follow the Belbin’s progress and vote for the family at energydiet.canadiangeographic.ca. The website also features a blog with descriptions of the family’s energy and waste reduction activities.

RDN WORKS WITH MULTI-FAMILY PROPERTIES AND WASTE HAULERS TO EXPAND RECYCLING AND GREEN BIN SERVICES

Multi-family dwellings, such as townhouses, apartments, and mobile home parks, are a significant and growing housing sector in the region. The RDN has taken a collaborative approach to increase recycling opportunities and make them consistent with curbside programs. This is a joint effort involving multi-family properties, waste haulers, the RDN and its municipal partners.

Before putting its Multi-Family Recycling Program into action, the RDN is developing a detailed database of

multi-family properties. The database will provide information on location, contact details, current recycling services and opportunities to expand recycling and potential food waste collection.

Once the research is completed, information on the Multi-Family Program will be sent to property owners and managers.



Beyond Recycling

zero|waste

Many multi-family complexes already provide recycling and food waste collection services that are consistent with those provided through RDN and municipal residential curbside programs. Multi-family property owners and managers should contact their waste hauler to ensure they are complying with landfill bans and to discuss options for introducing food waste collection at their location.



SMALL APPLIANCE TAKE-BACK PROGRAM LAUNCHED ON OCTOBER 1

"Unplugged" is a new BC take-back program that accepts and recycles your old and broken small appliances. Take-back programs, also known as "Product Stewardship", accept many consumer goods and packaging that are no longer useful.

Taking these materials back to retailers or collection depots for recycling or safe disposal prevents pollution, conserves resources, and extends the life of the region's landfill.

Industry-led take-back programs are funded through Eco-fees paid on products at the time of purchase. This makes producers and consumers responsible for end-of-life product recycling and disposal instead of local government.

APPLIANCES INCLUDED IN THE UNPLUGGED TAKE-BACK PROGRAM:



Air-Treatment

Air purifiers, portable fans, humidifiers and heaters.

Counter Top Appliances

Beverage Preparation - Electric kettles, coffee and tea makers.

Countertop Cooking - More than 25 appliances fall under this category including bread makers, countertop ovens, hot plates and toasters.

Countertop Cooking Motorized - More than 20 appliances fall under this category including blenders, can openers, juicers and mixers.

Microwave Ovens - Counter Top microwave ovens.

Floor Care

Electrical portable appliances and their accessories used for dry or wet cleaning of floor and upholstery surfaces.

Personal Care

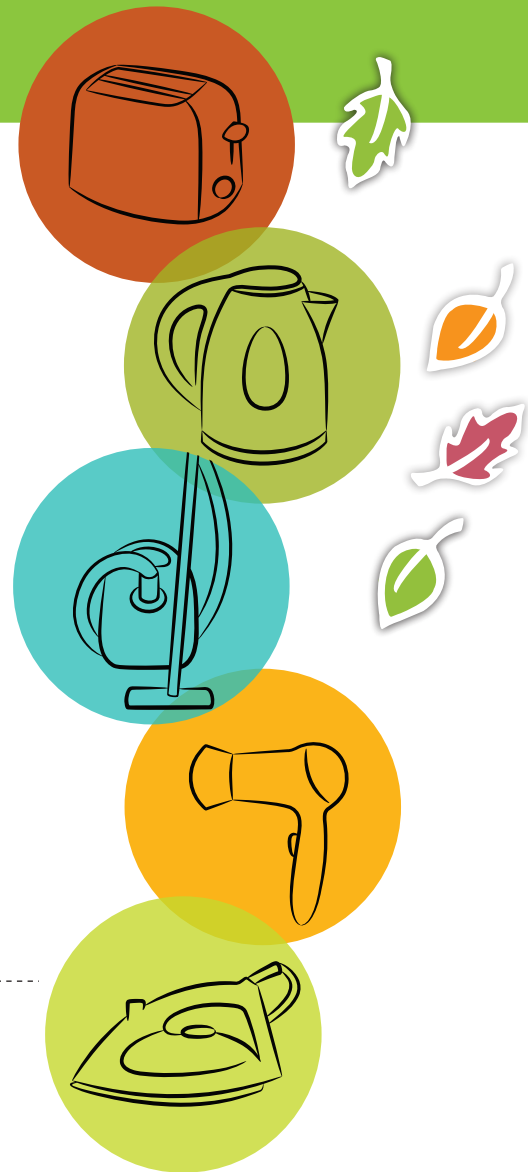
More than 16 products fall under this category including curling irons, electric toothbrushes, hair dryers and shavers.

Garment Care

Cordless, stationary and travel irons, and garment steamers.

Time and Weight Measurement

Electric clocks and timers, electric and battery powered bathroom scales and countertop food scales.



SMALL APPLIANCE RECYCLING DROP-OFF LOCATIONS IN THE REGION INCLUDE:

- Nanaimo Recycling Exchange, 2477 Kenworth Rd., Nanaimo
- Nanaimo Bottle Depot, 4151 Mostar Road, Nanaimo
- Parksville Bottle and Recycling Depot, 611 A Alberni Hwy., Parksville

Visit www.unpluggedrecycling.ca or call the Recycling Council of B.C.'s Recycling Hotline at 1-800-667-4321 for more information on acceptable and unacceptable appliances.

CONTACT INFORMATION

Email: zerowaste@rdn.bc.ca www.beyondcomposting.ca or www.rdn.bc.ca

Regional District of Nanaimo, Solid Waste Services

6300 Hammond Bay Rd., Nanaimo, BC V9T 6N2 | Ph. (250) 390-6560 or 1-877-607-4111

City of Nanaimo, Garbage & Recycling Program

Public Works Ph. (250) 758-5222 Website: www.nanaimo.ca

Beyond Composting

zero|waste